

The background is a light-colored marble with intricate, wavy veins in shades of beige, cream, and pale blue. A gold-colored geometric frame, consisting of a rectangle with a pointed top and a pointed bottom, is centered on the page. Inside this frame, the text "GRACE HALL" is written in a bold, gold, sans-serif font.

# GRACE HALL

LEADENHALL

— 147 LEADENHALL ST —



A photograph of a grand interior space featuring a series of tall, fluted marble columns. The columns are arranged in a perspective that leads the eye into the distance. The walls are also made of marble, with a large, polished panel on the right side. The floor is made of light-colored marble tiles. The overall atmosphere is one of elegance and historical grandeur.

## STATE OF GRACE

Period details dovetail with modern styling at this enchanting Leadenhall venue. Grace Hall accommodates from 20 to 600 guests thanks to the adjoining rooms, offering you complete flexibility.

OPENING AUTUMN 2017



# GRACE HALL

Step back in time and into this elegant art-deco hall, at the heart of the City. Grace Hall hosts up to 200 guests theatre-style, 170 seated and up to 600 standing across the venue's four event spaces.

---

## GRACE HALL

High ceilings, classic columns and sweeping marble: this space is Grace Hall's striking centrepiece. The perfect setting for weddings, launch parties, dinners and more.

### Capacities

Seated 170  
Standing 380  
Theatre 200

## THE DIRECTOR'S OBSERVATORY

The Director's Observatory sits on the first floor, with an ornate feature window overlooking Grace Hall. Gather here for smaller, more intimate events.

### Capacities

Seated 40  
Standing 80  
Theatre 50

## THE ARCHIVES

Nestled alongside Grace Hall, The Archives offer a stylish, secluded space to host meetings and smaller business events.

### Capacities

Seated 30  
Standing 60  
Theatre 30

## THE GRACE BELOW

Descend into The Grace Below, the atmospheric basement bar beneath Grace Hall, perfect for private gatherings.

### Capacities

Seated N/A  
Standing 80  
Theatre N/A



## DRINKS AND DINING AT GRACE HALL

Our in-house kitchen team bring a wealth of experience to every event.

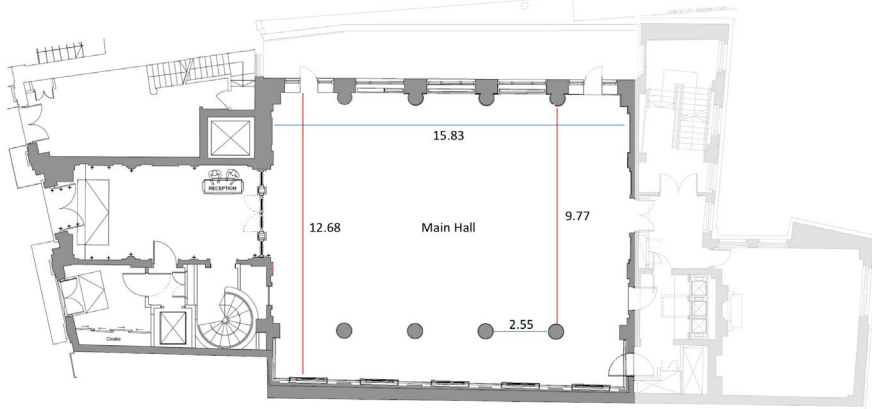
Every dish created using seasonal, British ingredients, and menus are tailored to suit your vision and requirements; from canapés and small plates to three-course banquets.

When it comes to drinks, we guarantee our cocktail list is exclusive to us. You won't find our drinks on any other event list. Quality spirits are infused with herbs, spices and fresh fruit to create some truly unique mixed drinks.

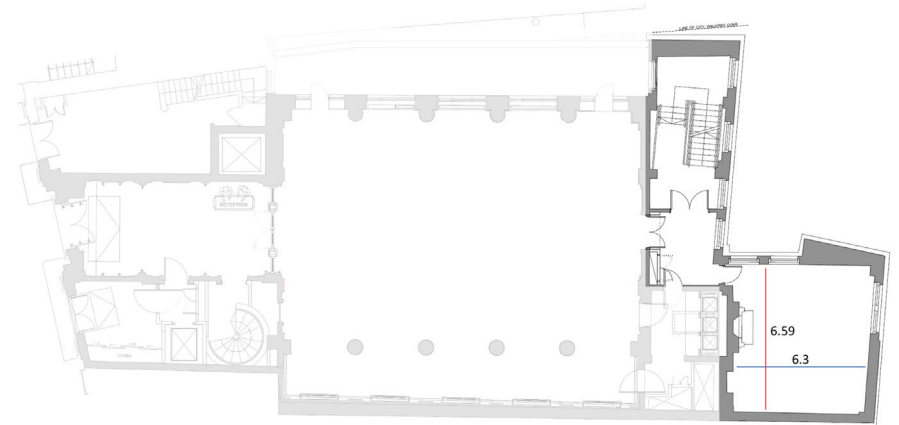




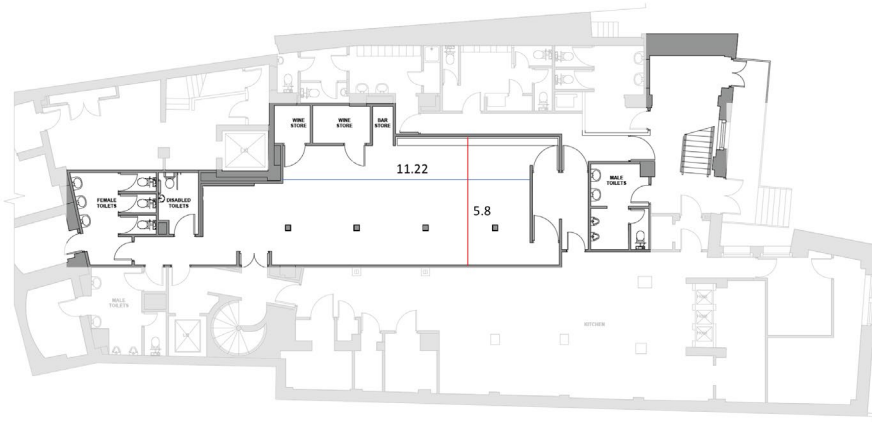
# FLOORPLANS



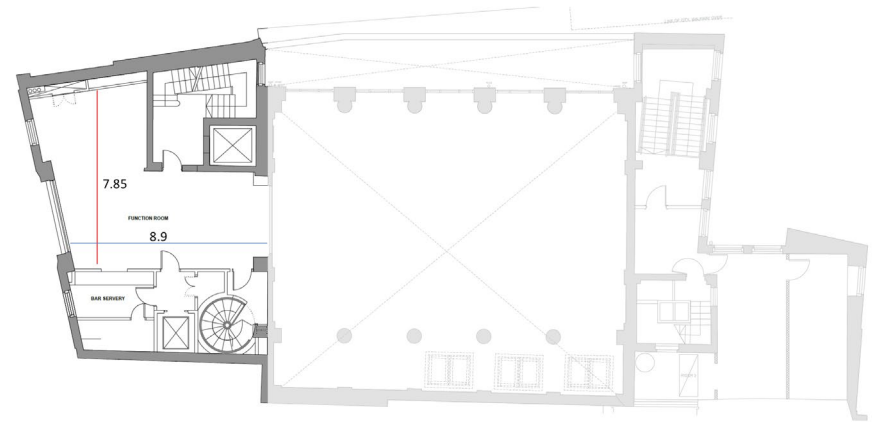
**GRACE HALL**



**THE ARCHIVES**



**THE GRACE BELOW**



**THE DIRECTOR'S OBSERVATORY**

# CONTACT US

A stylized map of London in shades of gray, showing the River Thames and a network of streets. A black dot marks the location of Grace Hall, with a callout box pointing to it. The callout box contains the text 'GRACE HALL' and 'LEADENHALL'.

**GRACE HALL**  
LEADENHALL

**GRACE HALL**  
**147 LEADENHALL ST**  
**LONDON**  
**EC3V 4QT**